



Coffee Brief

Date: July 7, 2022

Preparedness Levels & Alaska Fire Activity

Alaska	5
National	2

Light Initial Attack Activity New Fires and Acres: 11 fires for 1,026 acres

There are currently 14 staffed fires and 5 Complexes. Yesterday's large fire growth was ~25,494 acres

#346(FAS): ASM-B4, Lead A-4, S-260/262/261/263, T-52, T-162, T-101, T-540 all got into the mix on this incident

#458(UYD): 1 load SMKJs

#499(FAS): Rolled AA-0AX, AA-2GA, FB-211/214/216/217, S-261/263/260/260, T-52, T-101, and T-162. Requested 1 load SMKJs but they could not find an acceptable jump spot.

#501/502(TAD): Diverted J-90 to this incident after they could not jump #499. Dropped 2 SMKJs on #501 and 4 on #502.

Sources: National and AICC Situation Report, AICC Aircraft Logs

Prioritized Incident Details

Priority	Unit	Seq. #	Incident	Descriptive Location	Size in Acres	Yesterday's Acres	Change Since Last 209	% Contained/Completed	Expected Contain/Complete Date	Suppression Strategy	Complexity (Incident Management Organization)	IC	Total Personnel
2	AKFAS	346	Clear	10 NM from City of Anderson along the Teklanika River	55,585.0	52,987.0	2,598.0	8%	7/30	Point Zone	Type 2 Team	Al Lawson - IC	487
3	AKFAS	349	Minto Lakes	Minto Lakes/Chatanika River	34,386.0	34,386.0	-	0%	7/30	Point Zone	Type 1 Team	Jerry McGowan IC, Ken Kempter Deputy IC	297
4	AKTAD	898	Bean Complex	West of Fairbanks, some fires up 130 miles.	147,534.0	141,004.0	6,530.0	0%	10/1	Various	Type 2 Team	Nathan LeFevre, ICT2 Eric Knerr, DPIC Chris Orr, ICT2-t	259
5	AKDAS	894	Middle Tanana Complex	Nearest community is Delta, Alaska	26,456.3	1,292.2	25,164.1	0%	10/31	Various	Type 2 Team	Almas, Northern Rockies Team 3	155
6	AKSWS	899	Lime Complex	Sleetmute to King Salmon, Napaimute to Port Alsworth	785,539.0	782,468.0	3,071.0	0%	8/1	Various	Type 2 Team	IC Butteri	185
7	AKTAD	896	Dalton Highway Complex	0.5-5 miles off the Dalton Highway & East of Rampart AK	74,385.0	69,872.0	4,513.0	0%	8/31	Various	Type 3 Team	McCowan GB Idaho Team 1	90
8	AKGAD	897	Poorman Complex	Ruby, AK is the closest civilization.	55,504.0	52,493.0	3,011.0	0%	8/1	Various	Type 3 Team	Mitch Ketron ICT3	105
9	AKTAD	225	Snohomish	15 miles southwest of Lake Minchumina, AK	24,586.0	24,586.0	-	0%	8/31	Point Zone	Type 4 IC	0	41
10	AKTAD	431	Slathtouka	19 miles southwest of Allakaket, AK	158.6	158.6	-	0%	9/30	Point Zone	Type 5 IC	0	26
11	AKUYD	444	Bearman	25 miles northwest of Fort Yukon, AK	183.6	149.2	34.4	0%	9/30	Full Suppression Monitor	Type 3 IC	0	53

Source: AMAC Incident Prioritization List, ICS-209s

Resources

Aviation within Alaska	Total
Smokeumper	6
Air Tactical	11
Air Tankers	5
Scoopers	22
Utility	8
Helicopter, Type 1	2
Helicopter, Type 2	20
Helicopter, Type 3 Standard	11
UAS	4
Total Aircraft	89

Crews Committed within Alaska	
Type2IA	13
Type 1	19
Type 2	8
Type 1 Module	8
Type 2 Module	6
Total Crews	54

Incident Mangement Teams in Alaska	
CIMT	
IMT 1	1
IMT2	6
IMT3	5
Total IMTs	12

AVIATION

T-162 on day off today

AIRSPACE/TFRs

2/7355 Minto Lakes
2/6808 Lime complex
2/7164 Clear
2/7505 Gold Hub

SMOKEJUMPERS

Anticipated smokejumpers available: 28
~ 100 SMKJ's committed + 4 as single resources (3 boat operators and 1 ICT3 trainee)

Smokejumper Demobilizations

Yesterday: #312/Bean-8; #460- 6, #449- 2; #465- 4; #408 - 4; #444 - 3
Planned for today: #502 – 4; #501 – 4; maybe #465 - 4

CREWS

Gannet Glacier on days off – anticipated availability ~July 11

Jet # 8 Allocation – Arrival TBD
Clear - 346 - Feather River T2IA
Middle Tanana Complex - 894 - Beckworth IHC

Lime Complex - 899 - Mad River IHC
Slathtouka - 431 - Smith River IHC
Slathtouka - 431 - Tahoe IHC

NICC JET MOVEMENT

7/8 – Jet Load #8 Arriving

Feather River T21A
Beckworth IHC
Mad River IHC
Smith River IHC

7/8 - Jet #1 - Lehub of Jet #2 out of FBK

Redmond IHC
Prineville IHC
La Grande IHC
Vale IHC

* Last workday = 7/6, travel to Fairbanks 7/7, fly out on the Jet 7/8

OVERHEAD/TEAMS

- 60 pending overhead requests
- NW Team 7 Extension signed and requested
- Anticipate NEWICC Team 3 to start mobilizing to Allakaket today

Source: IROC Reports, [National Smokejumper Status Report](#), AK Incident Aircraft Tracking Spreadsheet & AICC Documentation

Weather Summary

...RED FLAG WARNING...

Ample thunder over dry fuels for portions of the Interior today

Hot, dry, and windy for the Copper River Basin today

High pressure aloft is centered over northwest Canada and is providing very warm temperatures to mainland Alaska. Humidity is low but not terribly so, with values in the Copper River Basin dropping into the upper teens 20s again this afternoon.

Thunderstorms today will mainly develop in the central and eastern Interior, and there will likely be several thousand strikes each day, with a good chance of starting new fires due to the dryness of the fuels and the limited potential for these thunderstorms to produce wetting rains. Temperatures will also be very warm for the Interior, with widespread upper 70s and 80s. Thunder will continue over the Interior into the weekend, as well as temperatures 5 to 10 degrees above normal.

Southeast wind to 25 mph are combining with warm temperatures and dry humidity to produce Red Flag criteria in the lower elevations of the Copper River Basin today.

By early next week, warm weather with prominent thunderstorm activity in the afternoons and evenings will persist for the Interior. However, western, South Central, and Southeast Alaska will have cooler temperatures, higher humidity, and periods of precipitation.

Source: Alaska 7-Day Outlook

Fuels/Fire Potential

Surface fuels have begun to be affected by showery activity in the Interior. Highest FFMC values are in eastern portion of the State and Copper River. Surface fuels in southwest Alaska continue to moderate and slow fire spread temporarily. There will be continued large fire growth in areas with good ventilation. Fire growth can either be fuels or wind driven. Increased smoke production will continue to limit fire spread.

Subsurface drying continues to drive fire spread. The Duff Moisture Code (DMC), which is the main component of the Buildup Index (BUI) this time of year, is extremely dry across areas of the Interior, Southwest and South Central. The footprint of extreme values is increasing daily given current weather. The dry duff layers increase fireline intensity and resistance to control, requiring more time and effort to manage. As the drying continues, the increasing resistance to control will slowly begin to increase the resistance to extinguishment as deeper fuels dry. Fires around Delta have reported active burning in hardwood stands and 2004 burn scars which are normally barriers to fire spread. South Central currently does not have large fires, but fuels are conducive to support spruce-driven fire spread with any new ignitions. Copper River continues to dry and DMCs are becoming for flammable.

BUIs are increasing across greater areas of Alaska and continue to support large fire growth across the state.

When encountering a mismatch between a point value based on actual weather observations and the background grid, please discount the grid and go with the points.

Source: Alaska 7-Day Outlook

Fuels Status [Alaska Fire and Fuels Map](#)

[A Fuels and Fire Behavior Advisory was Issued 6/25/22](#)

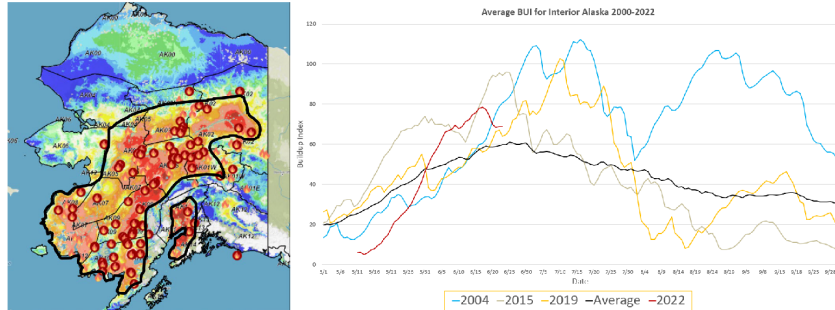
Fuels and Fire Behavior Advisory Interior, Southwest, and South-Central Alaska

Valid: June 25 – July 8, 2022

Subject: Exceptional landscape flammability and widespread ongoing large fire growth.

Discussion: The Buildup Index (BUI) is the best indicator of seasonal severity and overall flammability of fuels in Alaska. It represents deeper drying in the duff layers and greater fuel availability. Large fire growth occurs from mid-June to mid-July surrounding the summer solstice when long days and rapid drying can produce elevated BUIs. Southwest Alaska normally experiences shorter periods of high flammability but has had numerous fires burning since the end of May. By mid-June fire activity began to spread eastward in the Interior. Numerous fires are now burning in the central Interior. The area of activity is expected to expand eastward into the Yukon Flats. South Central has been drying rapidly and BUIs are now at record levels.

Difference from normal conditions: The attached graph shows the current 2022 BUI trend for the Interior of Alaska compared to other busy fire seasons. 2022 has been above average BUI since May 31, and higher than 2019 levels for the same period. Convective precipitation has moderated values in some areas but forecast high pressure will rapidly increase values. Much of the landscape has experienced large fire growth earlier than usual. Multiple days of wetting rain adding up to more than one inch will be needed for lasting relief.



Concerns to Firefighters and the Public:

- Spruce stands are extremely flammable, will ignite readily, exhibit rates of spread more than one mile per hour, torch, and spot prolifically up to ¼ mile or more, and exhibit intense crown fire behavior.
- Temperatures above 80 degrees and RH below 30% are important thresholds for rapid spread and crown fire behavior. Strong winds are not required for large fire growth.
- Long-term drying has stressed green fuels and is encouraging spread into riparian areas and less flammable hardwood forests. These fuel types may no longer be barriers to fire spread.

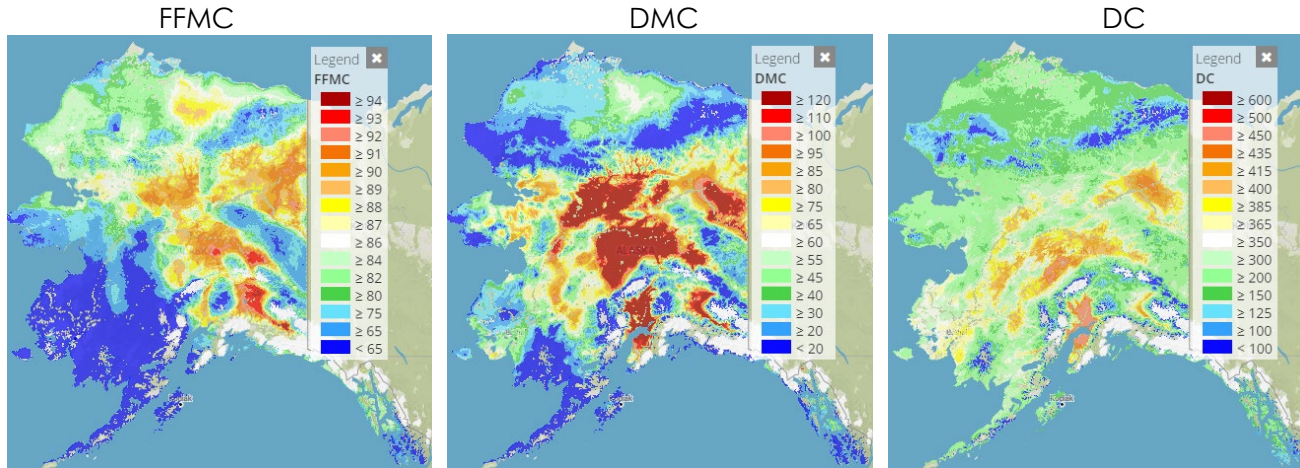
Mitigation Measures:

- Ensure that you can recognize hazardous fuel types including tundra that is exceptionally dry.
- Understand the triggers and thresholds for problem fire behavior.
- Monitor forecasts and indices to anticipate areas of increased flammability and extreme fire behavior.
- Maintain clear communications when working around active fires.

Area of Concern: Interior, Southwest and South Central Alaska

Issued By: Alaska Interagency Coordination Center Predictive Services

Click on the following images for direct links to the maps.



For additional fuels information visit <https://akff.mesowest.org/>

Sources: AICC Predictive Services – Fuels/Fire Danger web page, Alaska Fire & Fuels web page

The Coffee Brief is posted at PLs 4 and 5 only.

